

## FREQUENTLY ASKED QUESTIONS

### 1. What grades are at Imagine High?

- In the 2022/2023 school year Imagine houses students from Grades 9-11.
- The school will expand to Grade 9-12 in the 2023/2024 school year and celebrate its first class of graduates.
- Grade 11 and 12 will be added in September 2022 and September 2023, respectively.
- There is capacity for 700 students, grades 9 – 12 at Imagine High (175 per grade).

### 2. Who can attend Imagine High?

- Imagine High, as a public school of choice, has no catchment area so students in the Chilliwack residential area are welcome to register.
- Students who live outside of Chilliwack may also register, but preference will be given to families living in the Chilliwack community.
- Following registration, the principal will schedule a Zoom meeting with the family and student to discuss the student's interests, talk about the learning at Imagine High, and together determine if the school is a good fit.

### 3. What about students with Ministry designations or specific learning needs?

- All students are welcome at Imagine High.
- The Inclusive Design Team teachers at Imagine High will work with learning communities to provide the resources, supports and individual programming that promote inclusion and participation for all students within regular classrooms.
- Competency-based Individual Education Plans will be developed in consultation with parents, students and teachers.

### 4. How is learning the same/different at Imagine High?

- Please visit our website to check out [our Learning Framework](#).
- At Imagine High, the BC Curriculum is delivered in an integrated manner around projects.
- The day at Imagine is divided into two halves: Integrated Core (English, Socials, Math, Science and Career Education) and Electives.
- For Integrated Core, students are in communities of 60-90 students with 2-3 core teachers.
- Working together in collaborate teams within their learning family, students work on projects, problems or questions that link core subjects together.

- Arts and technology are woven into the Integrated Core.
- Students can sample arts and technology through a wide range of elective options, Deep Dives and extra-curricular activities.
- Twice a year, students participate in Deep Dive Institutes for 2-3 weeks (intensive elective condensed courses). All regular learning is suspended during Deep Dives.
- Students use art and technology to showcase their learning through exhibitions that include artifacts, performances, presentations and demonstrations.

## **5. What kind of arts and technology?**

- Imagine High will provide opportunities for students in a variety of arts and technology: video game development, photography, theater, dance, music, visual arts, creative writing, culinary arts, applied design, digital media arts, foods, textiles, music, animation, media design, robotics and electronics, information and communications technology and shop.
- Our focus at Imagine High is on experiential, hands-on learning, the design process and creative expression.
- While the school is not a performing arts school, there will be opportunities for students who are interested in performance.
- Portable technology to support student learning (IPADs and laptops) and Imagine High is also a Bring Your Own Device school ([See policy here](#))

## **6. What are the facilities and resources at Imagine High?**

- 240 seat theater with state-of-the-art lighting and sound
- Dance, art, and music studios
- Woodshop
- Maker Space
- Culinary Arts kitchen
- Foods and textiles
- Spacious and well-equipped Learning Commons
- Creative recording studio (visual and audio)
- Computer lab
- Brand new gymnasium and workout room
- Science classrooms

## **7. Will my child be prepared to go to post-secondary education or training?**

- Yes, graduates of Imagine High receive the standard provincial Dogwood Diploma all other BC high school students graduate with.

- School staff will work with students and their families to determine course requirements and paths to post-secondary.

## **8. What about French? Other languages?**

- French 9, 10, 11 are optional courses. Please note that many post-secondary institutions require a second language.
- Other languages will be offered depending on student interest.

## **9. Will there be sports at Imagine High?**

- Imagine High has a brand-new gym with a state of the dance studio and weight room
- Yes - sports teams will be created based on student interest.
- The following teams are registered for BC School Sports: Basketball, Volleyball, and Ultimate Frisbee

## **10. Will there be clubs at Imagine High?**

- Yes - clubs will be created based on student interest.
- The following clubs are currently running: Theatre, Anime, Design, Leadership, D&D, Minecraft, Podcast

## **11. What about transportation to Imagine High?**

- There is no scheduled bus transportation to Imagine High through the school district.
- However, families may apply for courtesy busing through the Transportation Department: <https://sd33.bc.ca/transportation-department>
- The Chilliwack city bus stops on Yale Road, just minutes away from Imagine High <https://www.bctransit.com/chilliwack/home>

## **12. Do siblings get preference for registration if an older sibling is already attending Imagine High.**

- Yes, siblings do get preference for registering at Imagine High.
- Following registration, the principal will schedule a Zoom meeting with the family and sibling to discuss the student's interests, hear more about Imagine High, and together determine if the school is a good fit.

## **13. Do you have a Parent Advisory Council? Parent volunteers?**

- Yes, we welcome parent involvement and participation!
- Information regarding the Imagine PAC is available on our website.

- Parent volunteers will be welcome at Imagine High.

### 15. When can we visit the school?

- Throughout the year, Imagine hosts open houses. Please visit our website and social media for more information.
- We will provide Imagine High students and families an opportunity to tour the school during the week before school for guided tours. Families will be sent sign-up information in July.

### 16. What is the bell schedule?

- We don't have bells! However, our start time is 8:47 am and students finish their day at 3:07 pm.
- Lunch is 11:37 - 12:17

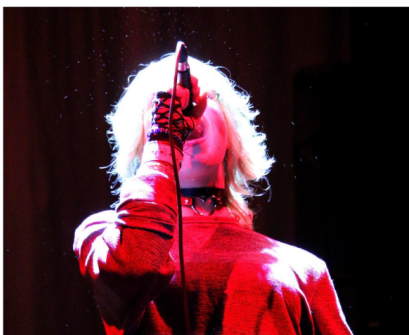
### 17. Is Imagine High a closed campus?

- Grade 10/11 students can go off campus at lunch at all times
- Grade 9 students will be able to go off campus at lunch starting October 1<sup>th</sup>.

### *Need more information?*

Contact our Welcome Center Team: [iss-alloffice@sd33.bc.ca](mailto:iss-alloffice@sd33.bc.ca) or call (604) 792-0941.

---



FOLLOW US @IMAGINESD33

