

STUDENT INFORMATION 2021-2022



FOR UPDATED 2021 COVID 19 PROTOCOLS, PLEASE VISIT:
<https://imagine.sd33.bc.ca/covid-protocols-2021-2022>

Imagine High Integrated Arts and Technology Secondary School

45669 Yale Road, Chilliwack BC, V2P 2N1

Phone: 604.792.0941 Fax: 604.792.0971

Imagine High is situated on the ancestral and unceded, shared territory of the Ts'elxwéyeqw and Pilalt Tribes. We are honoured to live, learn, work and play on this land.

OFFICE HOURS

Welcome Centre office hours are 8 am – 4 pm. All students and visitors are asked to enter through the main entrance. Visitors sign in at the Welcome Centre. Visitors must check in at the office and follow posted COVID 19 protocols.

For general office inquiries, please email
imagine@sd33.bc.ca

OFF CAMPUS

Students are expected to follow our Code of Conduct while at school or travelling to/from school, and while off campus during lunch hour. Students may leave campus during lunch according to the following schedule:

*Grade 10 starting September 8th
Grade 9 starting October 1st*

The campus is closed during regular instruction time.

PARKING

The main entrance circle is drop off parking only.

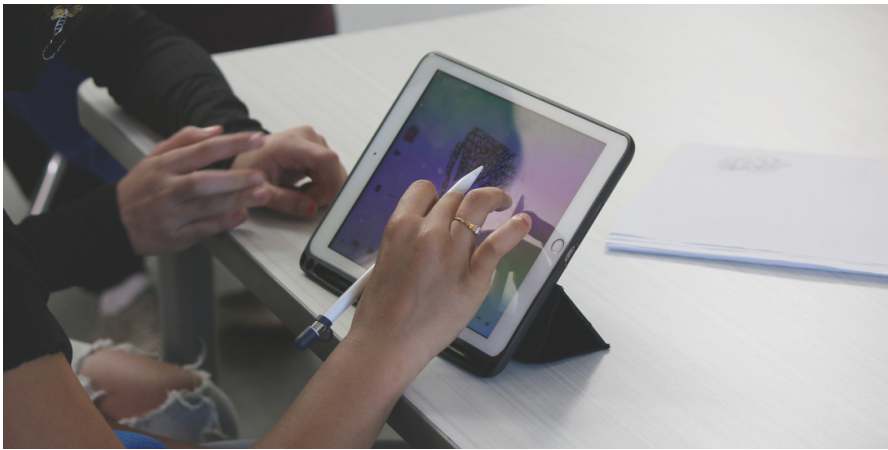
Family, student, and visitor parking is available in the east parking lot across the main road from the ADR Integrated Arts and Technology cohort building.



The Imagine Online School Store is now open!

Place your orders now for delivery to the school early October. Check out our swag here:

<https://imaginehighschoolstore.itemorder.com/sale>



BRING YOUR OWN DEVICE - TECHNOLOGY AT IMAGINE HIGH

Please see 605.1 [Administrative Regulation Technology Use](#):

Technology in the classroom is essential for increasing student engagement and empowering educators to create innovative learning experiences in and out of class. Imagine High has many programs available to students via cloud that do not require any additional software costs for students (Adobe Suite, Office, Teams). Teachers will demonstrate, guide, and help students practice appropriate and professional behavior while actively participating in authentic learning experiences.

- Technology is available for shared use at Imagine High, but students are welcome to bring personal devices
- Personal or mobile devices connected to Chilliwack School District information technology resources must be used in compliance with all parts of the [Chilliwack School District Acceptable Use Agreement](#)
- Imagine High/SD33 School District will not be responsible for any damages that may be incurred
- Classroom norms and expectations around technology use will be shared by classroom teachers in September



DAILY HEALTH CHECK AND MASK WEARING

- Staff and students are to continue to do their own Daily Health Check and should remain home if they are not feeling well.
- Mask wearing indoors for all K-12 staff, visitors and students in grades 4 to 12, including at their desks and on school buses.

START UP INFORMATION

- **First Day of School (September 7th)**
 - Main entrance doors open at 8:15
 - All students gather at 8:45
 - early dismissal at 11:30
- **Elective Course Changes**
 - Students may put their name on the add/drop list at the office for elective course change requests starting on the first day of school
 - Course changes will not occur past the first week of each quarter
 - Course changes are subject to availability of open spots
- **First Week Fun**
 - Whole school gatherings in theatre
 - Integrated Core/Electives launch
 - Scavenger hunts and community challenges
 - Student & staff BBQ at lunch on Friday (lunch provided)
- **Student Lockers**
 - Students using hallway lockers are required to use Imagine High combination locks
 - Students will be assigned lockers through Integrated Core teachers
- **Student Tech Accounts**
 - All student communication will come through SD33 student emails
 - Teams, Office and Adobe Suite are connected only through SD33 student email



Imagine High

INTEGRATED ARTS & TECHNOLOGY SECONDARY

2021-2022 NO-BELL SCHEDULE



8:45 School Begins

8:45 - 12:24 Integrated Core
(breaks vary by learning community)

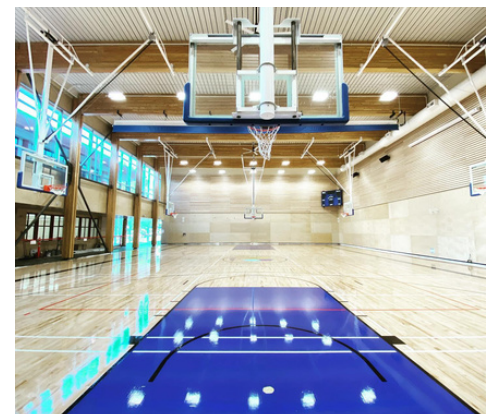
12:24 - 1:09 Lunch

1:09 - 3:12 Choice Electives

3:12 End of Day

NON-INSTRUCTIONAL & EARLY DISMISSAL DATES 2021-2022

- September 7- Early Dismissal
- October 21- Early Dismissal
- October 22 - Provincial Pro D NID
- November 12 - School Based NID
- November 26 - NID (in Lieu)
- December 20 - January 3 - Winter Break
- January 28 - Early Dismissal
- February 18 - District Pro D NID
- March 18 - Early Dismissal
- Mar 21 - April 1 Spring Break
- April 14 - Early Dismissal
- April 29- CTA Pro D NID
- May 20 -NID (in Lieu)
- June 22- Early Dismissal
- June 23- Early Dismissal



STAY IN THE LOOP WITH IMAGINE HIGH

Family Communication

- Primary communication is sent via MyEd BC - if you are not receiving emails, please contact imagine@sd33.bc.ca to double check contact emails

Imagine Website

- Check regularly for updated information, announcements, monthly calendar, and Imagine newsletters

Social Media

- Follow us on Instagram, Facebook and Twitter @imaginesd33

By Phone

- Please call 604.792.0941 to report student absences and for general information

By Email

- Please email our Welcome Centre staff at imagineofficestaff@sd33.bc.ca

IMAGINE HIGH COMMUNITY CODE OF CONDUCT - CONNECT, CREATE, CONTRIBUTE



Imagine High COMMUNITY CODE OF CONDUCT

Connect. Create. Contribute.

WE LIVE AND THRIVE TOGETHER AS A COMMUNITY OF LEARNERS - STUDENTS, STAFF, FAMILIES AND GUESTS - WHEN WE:

- We **connect** in a safe and inclusive way, respecting all members of our Imagine community.
- We **create** relationships that value individual differences and collective responsibility
- We **contribute** to a caring and welcoming environment by taking care of this place and each other.

We commit to create an environment in which all members of the Imagine family can connect, create, and contribute. We recognize that our students are developing as responsible participants of our community and, therefore, we remain focused on accountability for personal actions coupled with approaches that focus on empathy and the repairing of harm.



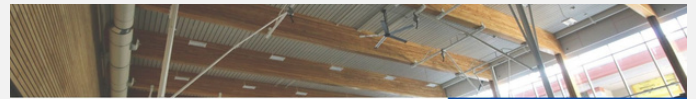
Connect.
Create.
Contribute.

All are welcome at Imagine High. Our community aims to be free from:

- Discrimination of any form based on race; ethnicity; ancestry; sexual orientation, gender identity or expression; religion, place of origin, family status, physical, mental ability, or other factors
- Bullying or harassment: a persistent pattern of unwelcome aggressive behaviour that hurts others physically and/or emotionally
- Retribution against a person who has reported concerns

Imagine Dress Code

Our student dress code supports our goal of inspiring students to learn while leaving primary decisions around clothing and style to students and families. Students will refrain from wearing clothing that contains discriminatory images, drug/alcohol references or imagery that negatively impacts a safe, welcoming learning environment.



Expected Actions

We expect members of our community to act in a way that makes the school safe, equitable, kind, and inclusive. Our community functions at its fullest though:

- Just, consistent, and reasonable expectations that embed student voice and choice
- Instructional design that promotes and reinforces pro-social skills, mediation, collaborative learning, and restorative practices
- Responsible choices and safe behaviours
- Collaborative problem solving
- Conflict resolution through restorative practices

Unexpected Actions

Unexpected behaviours or actions can interfere with personal safety, well-being, and learning. Unexpected actions may damage relationships, disrupt learning, or undermine safety.

They consist of, but are not limited to:

- Lack of respect or care for others
- Verbal (digital or face-to-face) harassment or physical aggression
- Destruction or misuse of property
- Actions that threaten the emotional or physical safety of others

Restorative Processes

WHERE POSSIBLE:

- Include students in the development of meaningful interventions through discussion or mediation
- Focus on finding solutions to repair relationships and re-integrate the student back into their learning community
- Support students with time and space needed for reflection, self-regulation and repair
- Create supportive conditions for students to learn and practice self-discipline
- Address injustices by addressing the needs of those who have been harmed and support restorative interventions

Responses to Unexpected Actions

To be equitable, responses must be flexible, and individualized. Responses may vary from student to student where an incident appears to be similar and will respect individual rights, needs, age or developmental level, and where they are in their learning journey. Responses will focus on restorative actions wherever possible. Serious incidents will result in communication with parents, school district officials, police, and/or other agencies as appropriate to support the students involved.

Responses may include:

- Review of expectations
- Meetings with parents/guardians
- Loss of privileges
- Student contract or support plan that includes strategies, supports and resources
- Referrals to district or community resources for additional assessment or support

The Chilliwack School District and community partners are committed to making our schools safe for students and staff. As a result schools will respond to all student behaviours that pose a potential risk to themselves, other students staff and members of the community. Please read [Fair Notice](#) - threats are taken seriously, investigated and responded to. Read our full Code of Conduct [here](#).

STUDENT LEADERSHIP

There is a vibrant student leadership community growing at Imagine High. Our students are taking an active role in building school culture, supporting diversity and inclusion, providing input in decisions and supporting students. If you are interested in joining leadership, please email Mrs. Haller (brooke_haller@sd33.bc.ca)



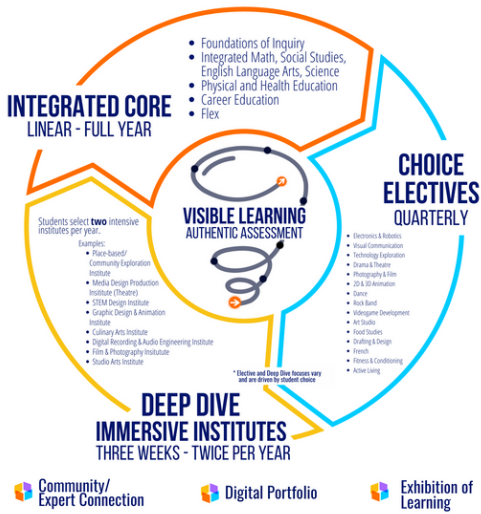
IMAGINE PAC

If you are interested in being part of the Parent Advisory Council at Imagine High, please email: iss-pac@sd33.bc.ca
PAC meetings and information will also be posted at: <https://imagine.sd33.bc.ca/imagine-pac>





CURRICULUM PATH - 2021/2022 GRADE 9/10



GRADE 9/10 CURRICULUM PATH

In the **integrated core**, learning is delivered through experiential interdisciplinary projects. Students build an understanding of their learning strengths, develop interests, explore their thinking to build independence, and create powerful demonstrations of learning.

Students select **quarterly elective sessions** in a variety of art and technology areas in order to build skills needed to showcase learning within the integrated core.

Deep Dives are dynamic and engaging immersive learning institutes that offer opportunities for students to go deep into interests within specific arts and technology focus areas. Deep Dive selections occur in October/November.

INCLUSIVE DESIGN TEAM

This team's purpose is to celebrate diverse learners within inclusive communities by creating equitable access to opportunities for deep learning. This team is guided by collective responsibility, high quality instruction, data-driven decisions and targeted intervention.

The IDT includes:

- Sonja Wykpis - Learning Assistance/English Language Learners
- Jennifer Anglehart - Resource Teacher
- Trish Lewis - School Counsellor
- Indigenous Education Enhancement Teacher - TBA



Syós:ys lets'e th'ále, lets'emó:t - (One heart, one mind, working together for a common purpose)



IMAGINE STAFF CONTACTS

Welcome Center General Email: imagineofficestaff@sd33.bc.ca

Principal - Brooke Haller (brooke_haller@sd33.bc.ca)

Vice-Principal - Stacey Parsons (stacey_parsons@sd33.bc.ca)

Program Director - Janet Carroll (janet_carroll@sd33.bc.ca)

Welcome Center Office Staff - Jacquie Marshall (jacquie_marshall@sd33.bc.ca) & Stephanie McKay (stephanie_mckay@sd33.bc.ca)

Business Manager- Deanna Davyduke (deanna_davyduke@sd33.bc.ca)

Inclusive Design Team- Sonja Wykpis (sonja_wykpis@sd33.bc.ca), Jenn Anglehart (jennifer_anglehart@sd33.bc.ca), Trish Lewis (trish_lewis@sd33.bc.ca), Indigenous Education Enhancement Teacher (TBA)

Teacher Librarian- Stephen Wylie (stephen_wylie@sd33.bca.ca)

Physical & Health Education - Kristen Low (Kristen_low@sd33.bc.ca)

Learning Community 1 Core - Joy Falk (joy_falk@sd33.bc.ca) & Kelly Skehill (kelly_skehill@sd33.bc.ca), Sonja Wykpis (sonja_wykpis@sd33.bc.ca)

Learning Community 2 Core - Matt Slykhuis (matt_slykhuis@sd33.bc.ca) & Joe Taylor (joseph_taylor@sd33.bc.ca), Trish Lewis (trish_lewis@sd33.bc.ca)

Learning Community 3 Core - Jessica Hohner (jessica_hohner@sd33.bc.ca) & Claudette Mellin (claudette_mellin@sd33.bc.ca), Jenn Anglehart (jennifer_anglehart@sd33.bc.ca)

Learning Community 4 Core - Penny Miller (penny_miller@sd33.bc.ca) & Chris Buxton (christopher_buxton@sd33.bc.ca), Sonja Wykpis (sonja_wykpis@sd33.bc.ca), Jenn Anglehart (jennifer_anglehart@sd33.bc.ca), Trish Lewis (trish_lewis@sd33.bc.ca)

Custodial Team- Greg Payne (greg_payne@sd33.bc.ca), Wayne Coupal (wayne_coupal@sd33.bc.ca), Damian Fajenski (damian_fajenski@sd33.bc.ca), Connie Toebosch (connie_toebosch@sd33.bc.ca)

Educational Assistants - Leah Gray (leah_gray@sd33.bc.ca), Brianna Braun (brianna_braun@sd33.bc.ca), Nicole Dubois (nicole_dubois@sd33.bc.ca), Nicole Causten (nicole_causten@sd33.bc.ca), Marly Anthony (marly_anthony@sd33.bc.ca), Carlee Lemon (carlee_lemon@sd33.bc.ca), Chesley Woods (chelsey_woods@sd33.bc.ca)

Child and Youth Care Worker - Rebecca Kuhn (rebecca_kuhn@sd33.bc.ca)